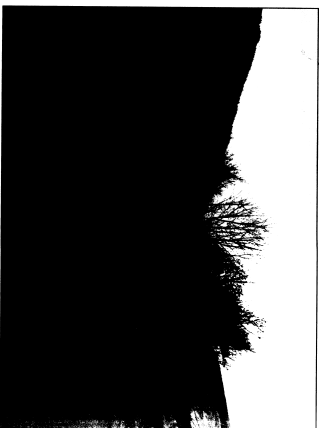


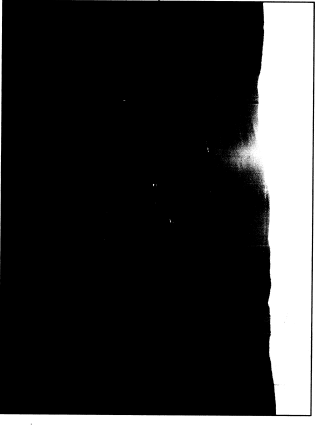
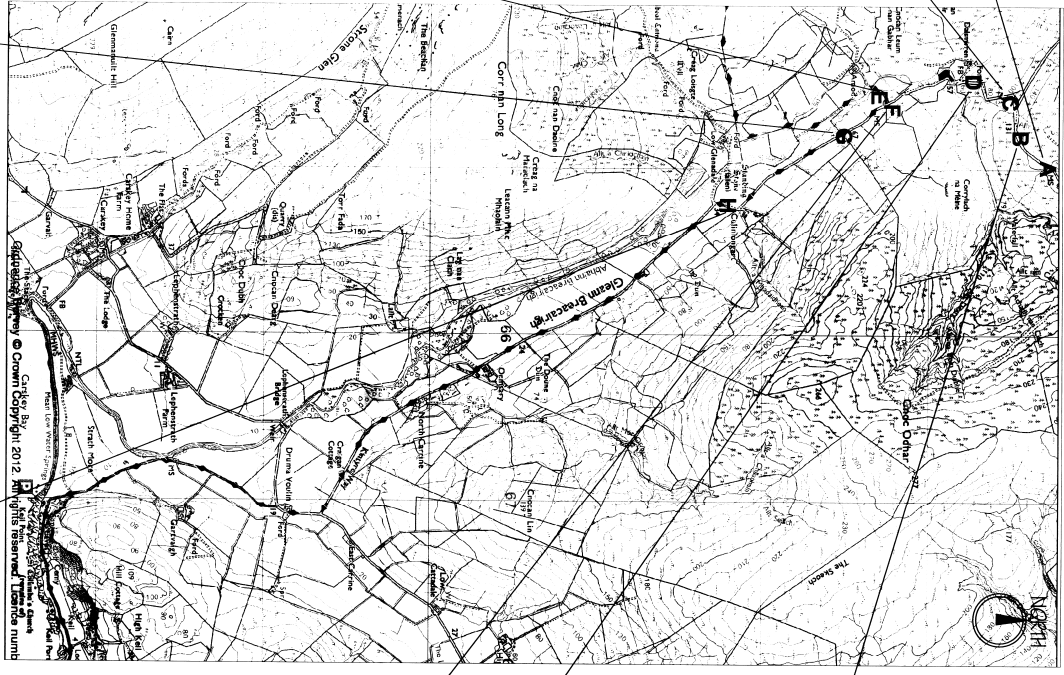
**Point A - View South to the valley floor travelling from the North**



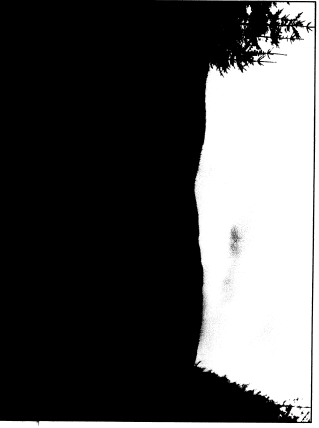
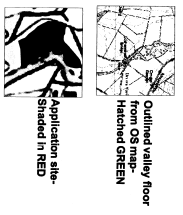
**Point C - View towards site obscured by trees**



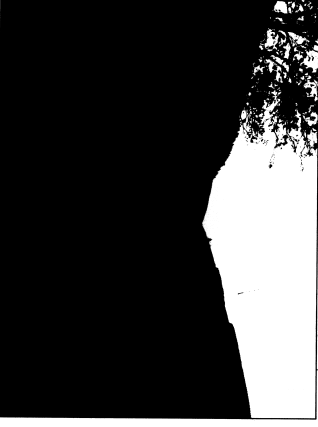
**Point E - View towards site from South at junction with Anrod Farm Road (Site not visible due to trees and topography)**



**Point B - View South travelling from the North**



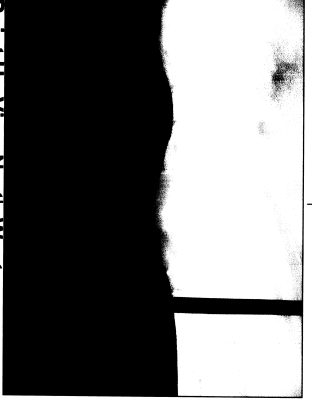
**Point D - Travelling South down the hill towards bridge (site not visible)**



**Point F - View from the South (site not visible due to topography)**



**Point G - View South showing the site**



**Point H - View North West**

Site for the erection of a dwellinghouse  
Land South of Dalamtran  
Southend  
By Campbelltown  
Ardull  
PLANNING APPEAL  
November 2012  
JCOATS- 12 / 100-PLANNING APPEAL